

Know Before You Go: NY-01 District Primer

September 2018 • Researched, summarized, and edited by Swing Left's all-volunteer research team!

In 2016, Republican Lee Zeldin won this district handily. Now with your help, Democrat Perry Gershon, a businessman and fierce Trump critic, can win this seat in 2018!

About the Incumbent:

Introduction: Republican Lee Zeldin is a lawyer, former military intelligence officer, and magistrate who has represented NY-01 since 2015. Raised in Suffolk County, he graduated from the SUNY Albany and Albany Law School. After law school, he joined the Army where he was deployed to Iraq in 2006 and has served in the Army Reserves since 2007. In 2010, he was elected to New York's State Senate for the 3rd District. In 2014 he was elected to Congress (NY-01) and reelected in 2016. He lives in Shirley, NY, with his wife and two children.

Issues: Zeldin runs on a law-and-order platform and favors legislation that benefits the military. He introduced several bills supporting vets, advocates for strict immigration laws, and supports ICE raids. A conservative on social issues, he's broken with the Republicans on fiscal ones, most notably the recent tax cuts. Although he opposes oil drilling off Long Island, he's supported the rollback of regulations on methane and ozone pollution and was given a score of only 10% by the League of Conservation Voters.

Committees: Zeldin serves on the Financial Services and Foreign Affairs Committees.

Recent Elections: In 2016 he defeated Democrat Anna Throne-Holst by 16%.

Strengths: Zeldin can count on his military experience and strong roots in the community. He points to his vote on the tax bill as evidence of his support for working- and middle-class taxpayers.

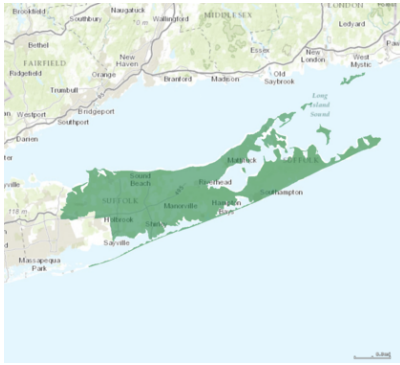
Potential Weaknesses: The company he keeps. Zeldin is strongly aligned with President Trump. Steve Bannon headlined a fundraiser for Zeldin in 2017, and Donald Trump Jr. hosted another this summer. Sebastian Gorka, the white nationalist and Trump advisor, spoke at a rally for Zeldin in June.

About the Challenger:

Introduction: Democrat Perry Gershon has lived in Suffolk County for more than 22 years and has deep ties to the community. His career includes 25 years financing commercial real estate and working for social justice as head of his synagogue's social action committee. Gershon advocated for New York's SAFE laws in the aftermath of the Sandy Hook tragedy, and he oversaw local relief efforts after superstorm Sandy. He has run 21 marathons, raising money for charitable causes. Gershon and his wife have two college-age sons. This is his first run for public office.

Issues: Gershon believes all Americans have rights to decent employment, quality affordable health care, a good education (including affordable higher education), and a secure retirement. He proposes to build a green energy economy in the district by manufacturing wind turbines and investing in infrastructure. He wants to provide good-paying jobs, with wages at levels of the unionized manufacturing economy. He supports gun violence prevention. He believes women should have control over their own bodies and would protect Planned Parenthood. He would protect Medicare and Social Security. He is a passionate environmentalist, noting that we depend on our environment for life itself.

Strengths: As a successful businessman, Gershon has a strong work ethic and problem-solving experience. So far as a campaigner, he has built an organization strong in grassroots engagement, local support, and fundraising. As a strong believer in social justice, Gershon sees parallels between the rise of authoritarian rule in 1930s Germany and Trump's leadership. He believes we cannot take decency for granted and that we all must fight for it in our own ways. He is running for Congress because he sees fighting back as his patriotic duty. Gershon has been endorsed by the NY AFL-CIO and NY SUT labor unions, Move On, and Suffolk County executive Steve Bellone.



NY-01: Facts & Stats

Population Centers

- Riverhead, pop. 33,506
- Hauppauge, pop. 20,882
- Farmingville, pop. 15,481
- Stony Brook, pop. 13,740
- Patchogue, pop. 11,798

2016 Presidential Results

- Clinton: 142K (42.2%)
- Trump: 183K (54.5%)

2016 House Results

- Throne-Hoist (D): 135K (42%)
- Zeldin (R): 188K (58%)

2014 House Results

- Bishop (D) : 79K (45%)
- Zeldin (R): 94K (53%)

NY-01: Better Know the District

Geography

NY-01 is located in eastern Long Island and includes most of central and eastern Suffolk County. The district is best known for its wealthy enclaves in the Hamptons, but it is also home to many working and middle-class communities as well as farms, fishing hamlets, and vineyards.

Citizenry

For NY-01, the 2000 census gave a total population of 634,360. According to a 2015 estimate, the total is 726,589. The district is 77.9% White, 4.9% Black, 3.7% Asian, 12.5% Hispanic. The district's median household income is \$88,144.

Elections

NY-01 was redistricted in 2012. In the 2016 presidential election, Suffolk County, which makes up a large part of NY-01, voted for Trump over Hillary Clinton by seven point despite having gone decisively for Obama in 2012. In the 2016 Congressional election, Zeldin beat Democrat Anne Throne-Hoist by 16 points, giving him the largest-margin Republican win since 1998.

Higher Education

SUNY Stony Brook, New York's flagship university (26,000 students), is located in the district. The non-residential Long Island University at Riverhead, part of the LIU system which locked out its unionized faculty in 2016-2017, is also located in the district. LIU Riverhead is also notable for its Homeland Security Management Institute, which offers [homeland security](#) training and is a Congressionally-designated Homeland Security Center of Excellence.

Industries

Arrow Electronics, a large electronic parts distributor, was headquartered in Farmingville until 2011 and still employs more than 12,000 people. Hauppauge Industrial Park is home to roughly 1,350 manufacturing, construction and service-industry businesses employing some 55,000 people. SUNY Stony Brook employs more than 14,000 people. A major recipient of funding from the Department of Energy, Brookhaven National Laboratory employs approximately 3,000 people as well as an additional 4,000 visiting staff, which turns over annually. Fisheries and agriculture round out the picture.